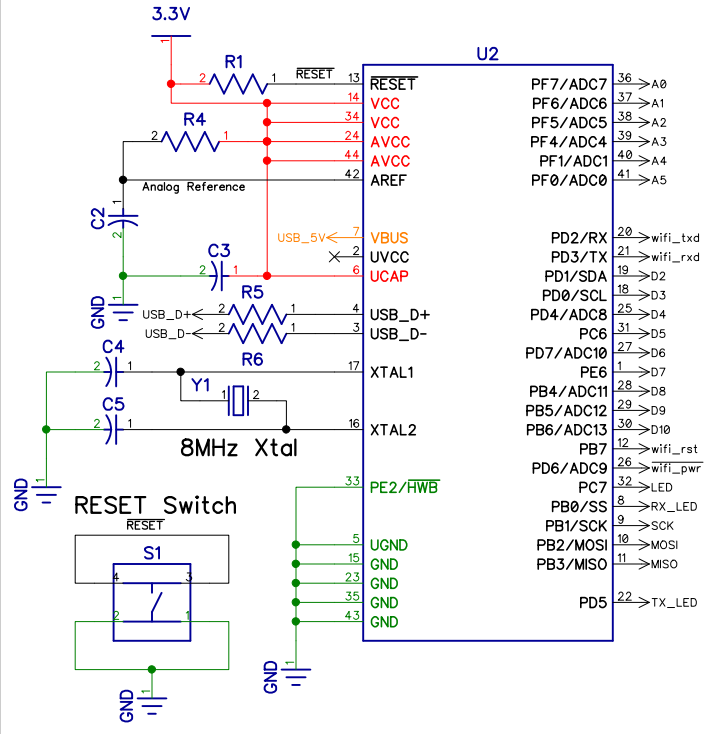
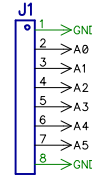


ATmega32U4 Microcontroller

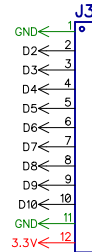


General Purpose I/O

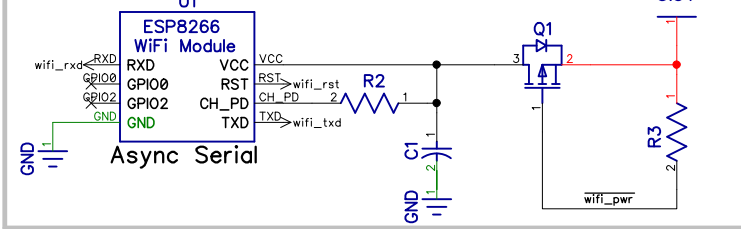
ADC Inputs



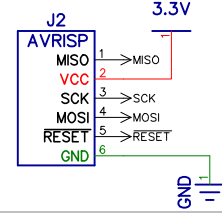
Digital I/O



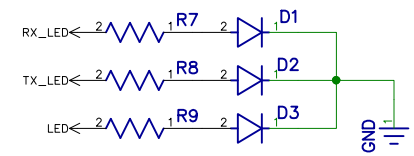
ESP8266 (ESP-01) WiFi Module



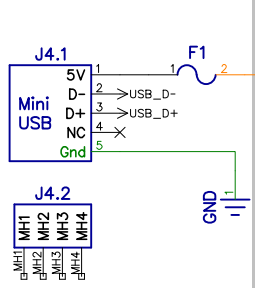
AVR In-Circuit Serial Programming Connector



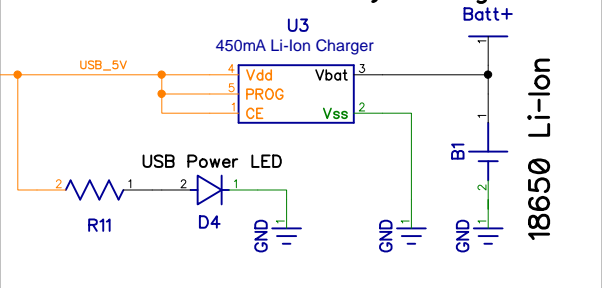
LEDs



Mini USB



450mA Li-Ion Battery Charger



3.3V 1A Voltage Regulator and Power Switch

